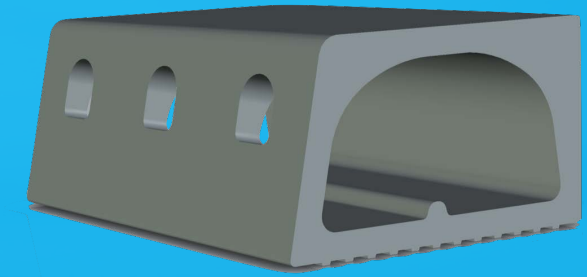


CE Declaration of conformity

NORM EN1433 REGULATION (EU) 305/2011 CONSTRUCTION PRODUCTS

Type M bridge drainage channel for collecting/draining surface and stratum water from bridges and elevated roads used by all types of road vehicles.



PRODUCT	BRIDGE DRAINAGE BD350 and BD350/150
LOAD CLASS	Applicable up to group 4 (class min. D400) type M according to the manufacturer's installation instructions (see installation details Bridge Drainage). Test basis EN1433:2005-09 Section 7.15)
CONFORM TO	EN1433:2005-09 Inclusive Annex A, Annex ZA, Annex B, Annex C
MATERIAL AND DURABILITY	Composite material made from recycled plastic
DIMENSIONS	L=500mm, B=350mm, H=200/205mm or H=150/164mm
WATERTIGHTNESS	No leakage according to section 9.3.6 of the standard (see installation details Bridge Drainage). Test basis EN1433:2005-09 Section 7.5.1
CERTIFIED TESTING INSTITUTE	KIWA GmbH Zweigniederlassung MPA Berlin-Brandenburg Nr. 0770
WEATHER RESISTANCE	+ R (KIWA KOAC ref: Ia22.3299)
ROUGHNESS	Pendulum Test Value: 38 (determined using the pendulum method according to RAW 2000 Test 76 with rubber plate "96")

ACCOMPANYING DOCUMENT:
Available on request

- Documentation about products
- Installation details

Signed:



Date: 2. February 2024

Post: Erik van Garsel,

Technical Manager
IDS-Group / Bridge Drainage