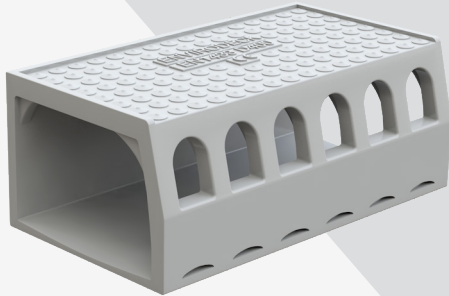


COMBINED KERB DRAINAGE FOR BRIDGES



STANDARD UNIT

Design Features
6no Surface Water Windows designed for maximum inlet capacity but also to restrict large debris from entering the drainage channel.

6no Sub – Surface Slots – designed for maximum sub surface water collection but also restricts the asphalt entering the channel during the laying operation.

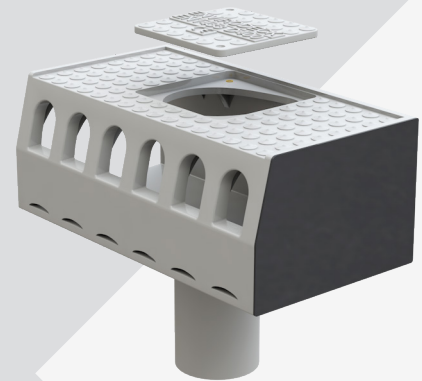
Standard unit. Low potential slip top surface.
Material - 100% Composite.
Colour - Light Grey as standard (see RAL colour chart for other colour options).

Length	Width	Weight	Depths	Weir Height
500mm	175mm 275mm 335mm 500mm	>9.5kg	Subject to Weir Heights & Asphalt Construction	Various

LH/RH END RODDING ACCESS AND OUTLET UNIT

Design Features
End Outlet Units – Available in Right hand and Left hand formats but with the system outlet attached to the unit in either BASE, REAR OR END position.

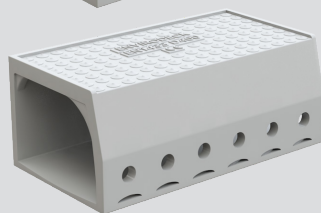
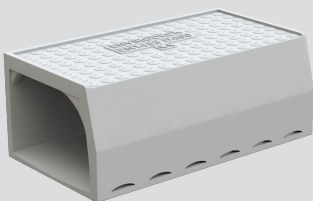
End Units – Available in Right hand or Left hand formats. The units arrive on site with end plates attached (no on site works are required).



Product Code	Length	Width	Additional Features	Weight	Depths	Weir Height	Depths
EN-LHEU EN-RHEU	500mm	As Standard Unit	Removable Lid	>9.5kg	Subject to Weir Heights & Asphalt Construction	Various	See table

* Cover above the outlet pipe should be checked, where end or rear outlets are proposed.

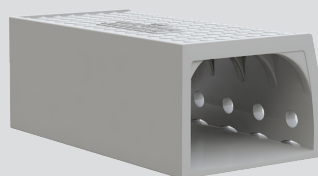
ASPHALT DRAINAGE & BLIND UNITS



Blind Unit Design Features

Blind Units are available. These have no surface water entry points and can be located where exceptionally high flows are anticipated at the low point of the deck.

These can prevent surface water surcharging back onto the carriageway and hold the water within the units prior to discharging at the outlet.

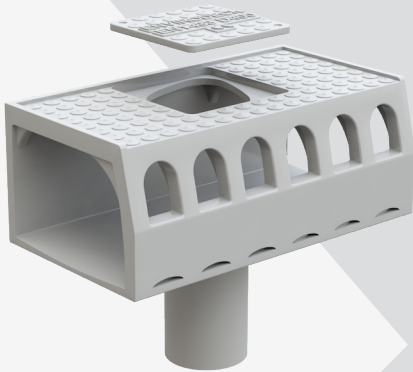


Asphalt Drainage Design Features

As an option, additional drainage holes can be provided to drain the wearing course.

This is particularly useful when porous SMA is used.

COMBINED KERB DRAINAGE FOR BRIDGES



500mm Intermediate Rodding /Access Unit with or without outlet.

RODDING ACCESS AND OUTLET UNIT

Design Features

Inspection/Rodding Units located at 20Mtr centres (minimum) along the drainage run and standard at all End/Outlet and Expansion Joint Locations. A removable inspection plug secured

to the body of the unit by stainless steel cable allows inspection/rodding of the system.

Product Code	Length	Width	Additional Features	Weight	Depths	Weir Height	Depths
EN-RA	500mm	175mm 275mm 335mm 500mm	Removable Lid	>9.5kg	Subject to Weir Heights & Asphalt Construction	Various	See Table

UNIT DEPTH TABLE

Examples of Unit Depth 1.

Profile	Weir Height	Overall Unit Depth
Splay	75mm	165mm

Examples of Unit Depth 2.

Profile	Weir Height	Overall Unit Depth
HB/ Splay	100mm	190mm

Examples of Unit Depth 3.

Profile	Weir Height	Overall Unit Depth
HB	125mm	210mm

ANTI SLIP SURFACE OVERVIEW

Design Features

All Envirodeck units come as standard with a new Anti-Slip top surface, (*Registered Design). The unique tread pattern design gives a "low tendency to slip" reading when tested in both wet & dry test cycles.



AESTHETICS

Design Features

Selection of RAL colour options

	Light Grey RAL 7035
	Buff RAL 1014
	Oxide Red RAL 3009
	Traffic White RAL 9016
	Traffic Black RAL 9017

All diagrams are for illustration purposes only, and should not be used as a technical reference.