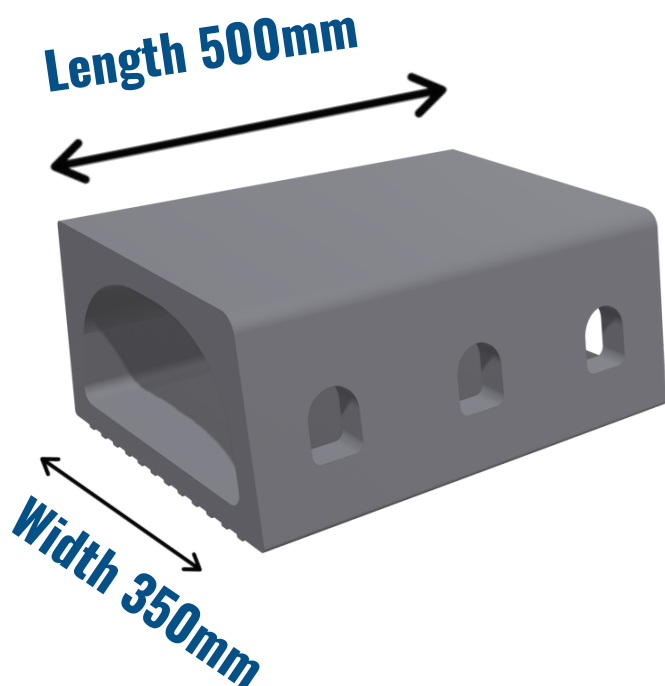
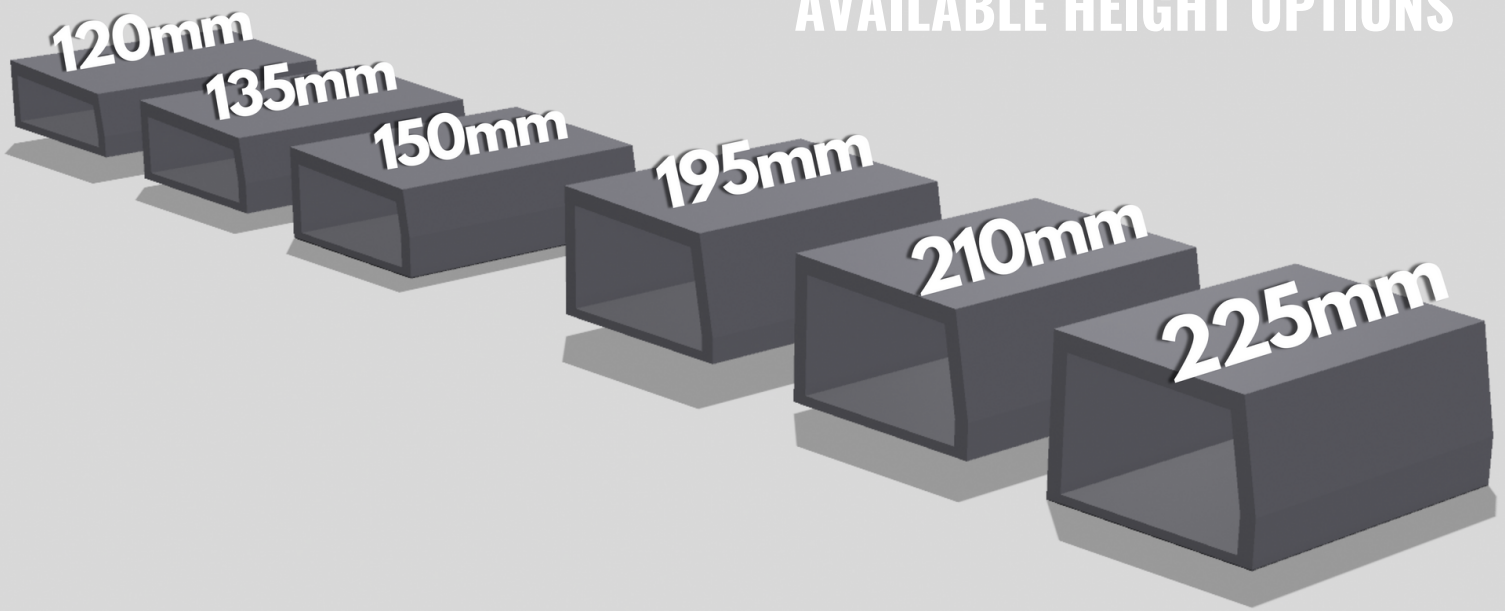


BRIDGE DRAIN UNIT

AVAILABLE HEIGHT OPTIONS



TECHNICAL CHARACTERISTICS

LOADING CLASS

Applicable until group 4 (min. class D400) Type M in accordance with the manufacturer's installation instructions (refer to Bridge Drainage Installation details). Test basis EN1433:2005-09 Section 7.15)

COMPLIANT WITH

EN1433:2005-09, Annex A, Annex ZA

MATERIAL AND DURABILITY:

Recycled plastic composite

WATER IMPERMIABILITY:

No leakage in accordance with 9.3.6 of the standard (Refer to Bridge Drainage Installation Details). Test basis EN1433:2005-09 Section 7.5.1

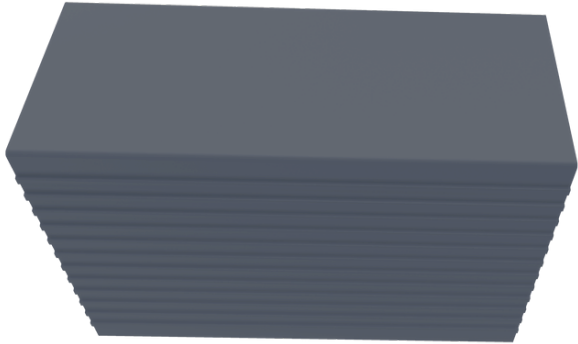


*70% from
recycled plastics
30% calcium*

TECHNICAL CHARACTERISTICS

- Environmentally friendly, made from 70% recycled plastic.
- Versatile applications.
- Large inlet cross-section, thus a high discharge capacity is available,
- which drains off accumulating water more quickly.
- Very suitable for installation with many cables and pipes.
- 2-in-1 solution, curb and drain pipe are installed in one operation.
- Prevents aquaplaning.
- Prevents corrosion of the structure, as the bridge body is not pierced.
- Large and fast drainage capacity due to side openings.
- Very suitable for renovation and new construction of bridge projects.

TECHNICAL DETAILS

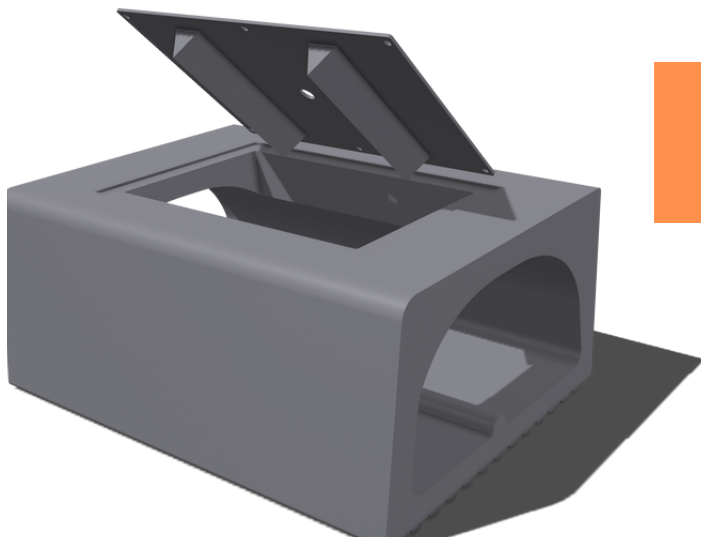
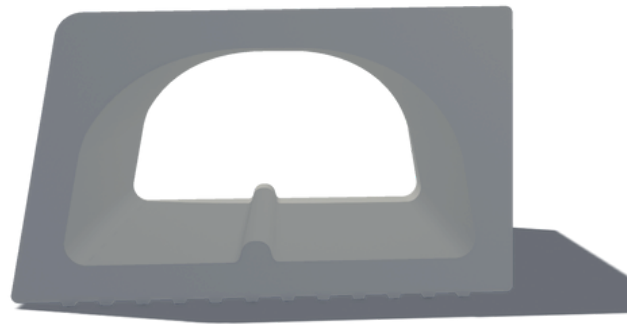


RIBBED BOTTOM FOR A BETTER ADHERENCE

As the units are installed on a bed of mortar, it is equipped with a ribbed bottom plate to increase the adherence to the mortar improving the unit stability

INTERNAL FLOWSTREAM SPLITTER

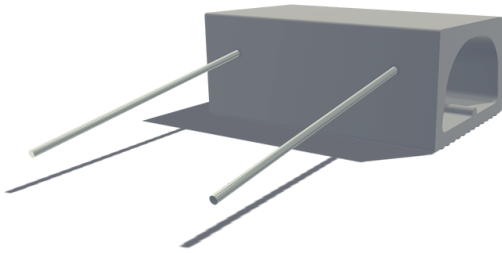
With the addition of the internal flow stream splitter, two narrower channels are created. when filled with rainwater the splitter allows the creation of a fast water flow. this higher velocity give the unit the ability to clean itself since the debris will be moved with the velocity of the water



INSPECTION OPENING

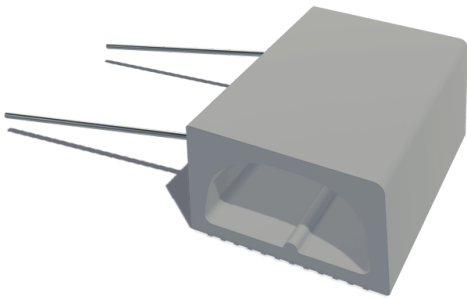
The units are equipped with an inspection unit on the top plate secured with screws. to conduct maintenance operations, the inspection opening can be opened, inspected and cleaned using a high pressure water jet

TECHNICAL DETAILS



STAINLESS STEEL ANCHORS

If needed, and to increase the stability of the unit in case of use of snow plows, we have added stainless steel anchor bars that will interlace with the steel foundation of the pedestrian area.



CONFORM WITH WEIGHT CLASS D-400

The units have been tested in collaboration with Kiwa and are resistance to weight load up to 40 tons