

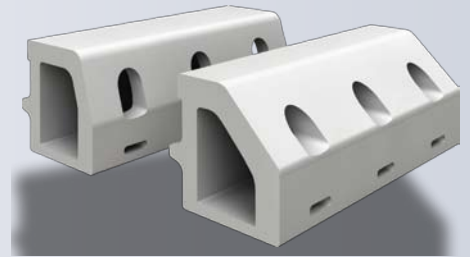
Enviro Bridge Drainage

150mm Standard Unit

500mm long with surface and subsurface inlets with either splay or Half Battered kerb face.

Design Features

A shallow Combined Kerb Drainage for restricted construction depths or for Bridges. Available with either HB or Splay profile and depths to suit. Due to the nature of the material and manufacturing process, we are able to produce numerous depths and kerb profiles not shown below. The 150mm wide unit is typically for low flow areas. Please call Sales for more information.



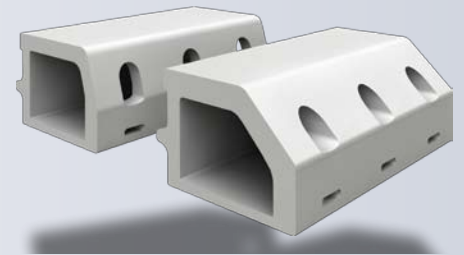
Product Code	Total Depth	Kerb Profile Height	Width Bore	Length	Weight
150mm x 165mm	165mm	75mm	100mm	500mm	9.2kg
150mm x 190mm	190mm	100mm	100mm	500mm	9.6kg
150mm x 210mm	210mm	125mm	100mm	500mm	10kg

220mm Standard Unit

500mm long with surface and subsurface inlets with either splay or Half Battered kerb face.

Design Features

Again available with either HB or Splay profile and depths to suit. Due to the nature of the material and manufacturing process, we are able to produce numerous depths and kerb profiles not shown below. We also have the advantage of the 235mm deep unit for standard roads, or for installation directly on the deck. Please call Sales for more information.



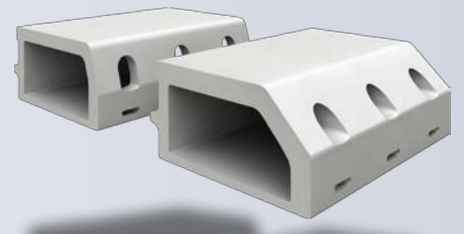
Product Code	Total Depth	Kerb Profile Height	Width Bore	Length	Weight
220mm x 165mm	165mm	75mm	160mm	500mm	12kg
220mm x 190mm	190mm	100mm	160mm	500mm	12.5kg
220mm x 210mm	210mm	125mm	160mm	500mm	13.5kg
220mm x 235mm	235mm	125mm	160mm	500mm	14.5kg

350mm Standard Unit

500mm long with surface and subsurface inlets with either splay or Half Battered kerb face.

Design Features

Again available with either HB or Splay profile and depths to suit. Due to the nature of the material and manufacturing process, we are able to produce numerous depths and kerb profiles not shown below. We also have the advantage of the 235mm deep unit for standard roads, or for installation directly on the deck. Please call Sales for more information.



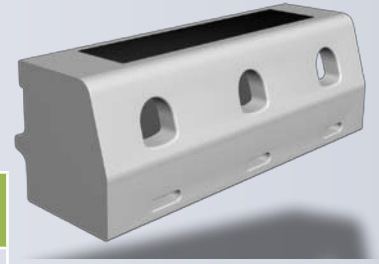
Product Code	Total Depth	Kerb Profile Height	Width Bore	Length	Weight
350mm x 205mm	190mm	Variable	255mm	500mm	19kg
350mm x 205mm	210mm	Variable	255mm	500mm	19kg

End or Intermediate Rodding Access Unit

End Rodding & Intermediate Rodding Access units

Design Features

End Rodding units are either left or right handed to suit the kerb line. Intermediate units are placed approx every 20mts. The access point is sufficient for rodding or jetting.



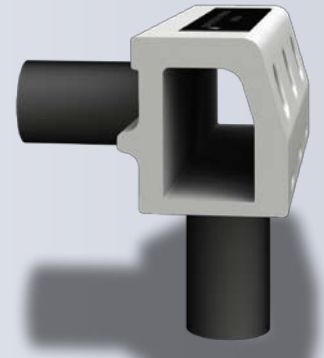
Product Code	Total Depth	Kerb Profile Height	Width Bore	Length	Weight
EU/IU	165/190/210mm	To suit std unit	100mm	500mm	10kg
EU/IU	165/190/210mm	To suit std unit	160mm	500mm	14kg
EU/IU	165/190/210mm	To suit std unit	255mm	500mm	23kg

End or Intermediate Outlet Unit Complete With Rodding Access

End OR intermediate outlet units.

Design Features

Outlets can be placed on base, at end of run (if space allows) or on the rear. The outlet is usually 110mm or 160mm outside diameter but can be size to suit site. All outlets will always be roddable.



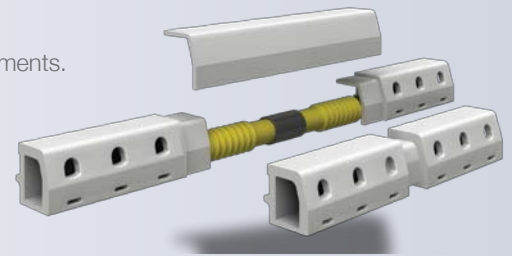
Product Code	Total Depth	Kerb Profile Height	Width Bore	Length	Weight	Outlet size
EUO/IUO	165/190/210mm	To suit std unit	100mm	500mm	10kg	110mm/ 160mm
EUO/IUO	165/190/210mm	To suit std unit	160mm	500mm	14kg	110mm/ 160mm
EUO/IUO	165/190/210mm	To suit std unit	255mm	500mm	23kg	110mm/ 160mm

Expansion Joint Assembly- Sliding or Standard

Either a 2mt expansion joint assembly or a 1mt sliding expansion assembly for small movements.

Design Features

Expansion Joint Assemblies are designed to bridge the Expansion joint on bridges. We have a number of standard units, but are always happy to design and manufacture bespoke assemblies for large or difficult joints. The sliding unit is for buried joints or joints that can be elevated to footpath level behind the kerb-line.



Product Code	Total Depth	Kerb Profile Height	Width Bore	Length	Possible movement
EXP	165/190/210mm	To suit std unit	150/220/310mm	1mt	+/- 40mm
EXP	165/190/210mm	To suit std unit	150/220/310mm	2mt	+/-120mm
EXP	165/190/210mm	To suit std unit	150/220/310mm	Special cover plate	Please call

For further inquiries, please contact:

info@bridge-drainage.com
www.bridge-drainage.com